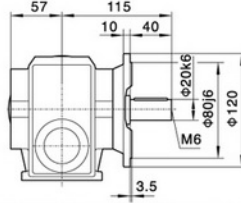
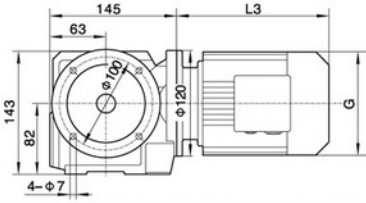
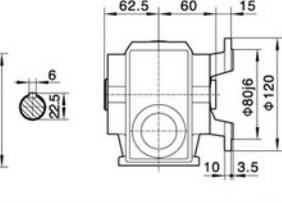


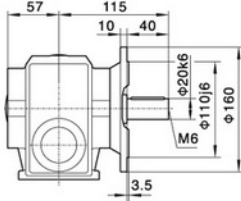
SF37/Φ120



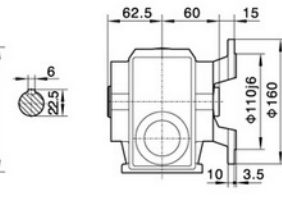
SF37/Φ120



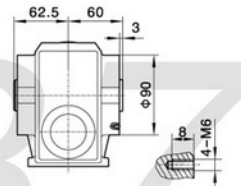
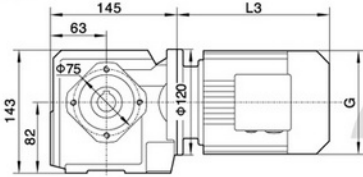
SF37/Φ160



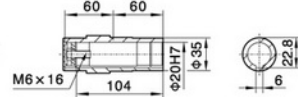
SAF37/Φ160



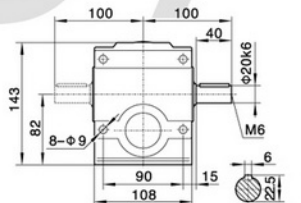
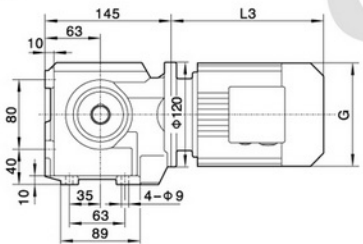
SA37



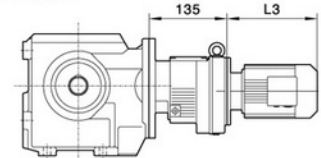
SAF37/SA37/SAZ37
 空心轴/Hollow shaft



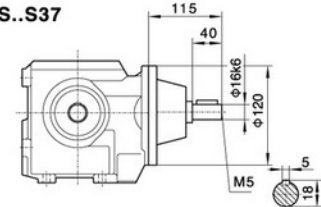
S37



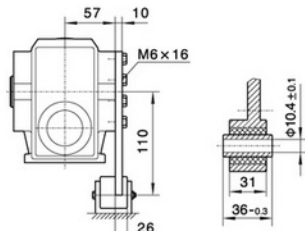
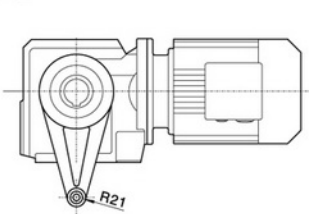
S..37R17



S..S37



SAT37



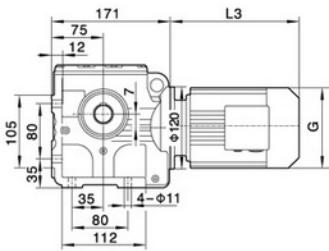
电机需方配或配特殊电机时需加联接法兰
 When equipping the user's motor or the special one, the flange is required to be connected.

注: 其余尺寸见相对应结构形式
 Note: For other values please refer to the opposed structure.

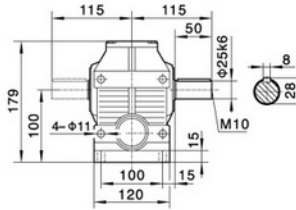
Y2电机座号 Motor size	63	71	80		
功率/4P Power/(kW)	0.18	0.25 0.37	0.55 0.75		
L3	235	245	278		
G	130	145	175		
L2	71	71	71		

注: 1.SA, SF, SAF, SAZ壳体为通用件, 安装尺寸均可相互参照。2."S.."表示S, SA, SF, SAF, SAZ

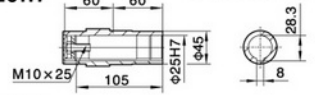
Note: 1.The housings of SA, SF, SAF, SAZ are common parts. The mounting dimensions may consult each other. 2."S.."mean S, SA, SF, SAF, SAZ



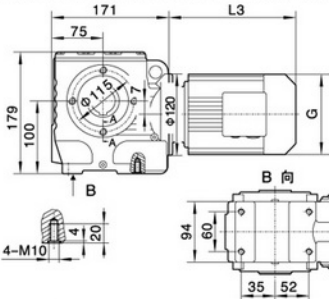
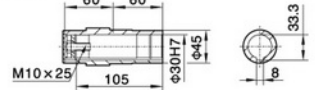
S47



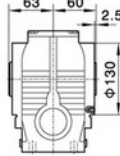
Φ25H7 /Hollow shaft



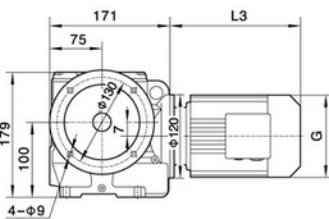
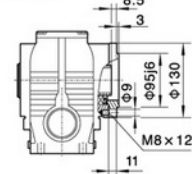
Φ30H7



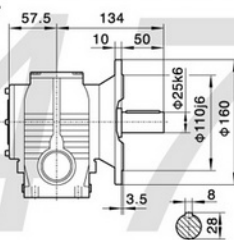
SA47



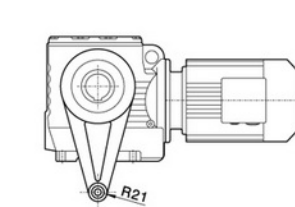
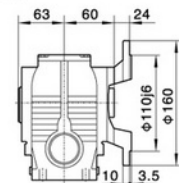
SAZ47



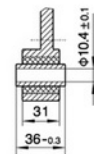
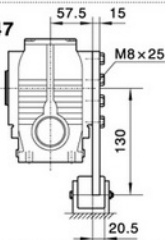
SF47



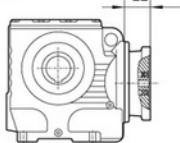
SAF47



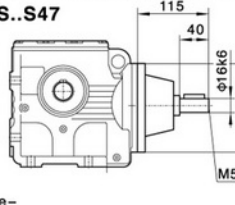
SAT47



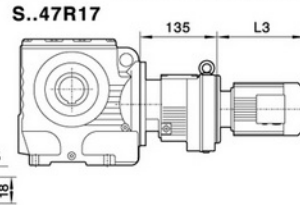
电机需方配或配特殊电机时需
加联接法兰



S..S47



S..47R17



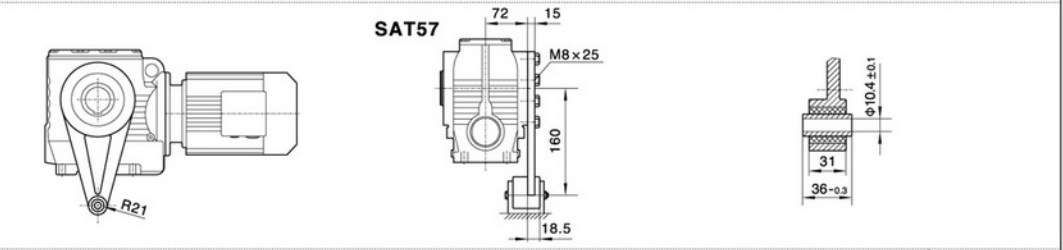
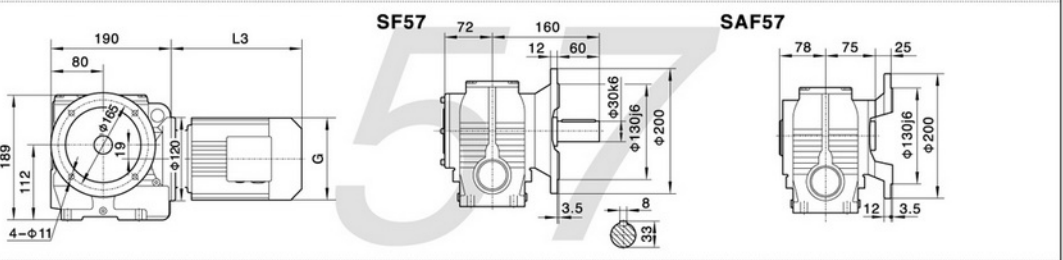
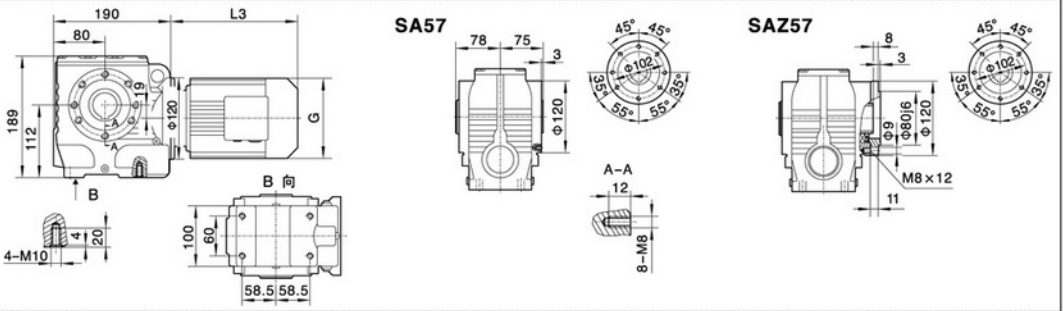
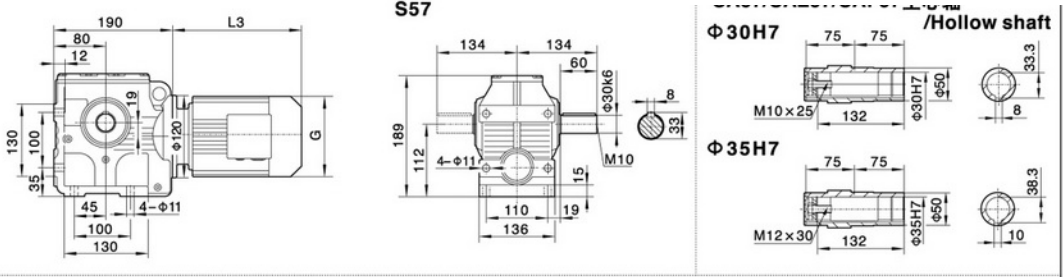
注: 其余尺寸见
相对应结构
形式
Note: For other
values please
refer to the o-
posed struc-
ture.

When equipping the user's motor or the special one, the flange is required to be connected.

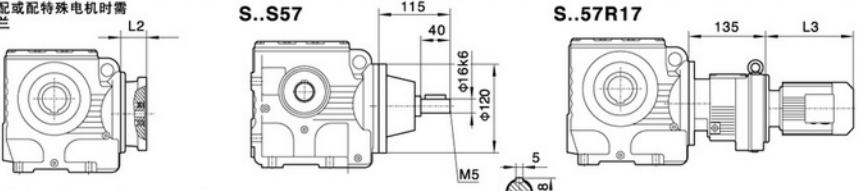
Y2电机座号 Motor size	63	71	80	90S	90L			
功率/4P Power/(kW)	0.18	0.25 0.37	0.55 0.75	1.1	1.5			
L3	235	245	278	304	328			
G	130	145	175	195	195			
L2	71	71	71	71	71			

注: 1.SA、SF、SAF、SAZ壳体为通用件, 安装尺寸均可相互参照。2."S.."表示S、SA、SF、SAF、SAZ

Note: 1. The housings of SA, SF, SAF, SAZ are common parts. The mounting dimensions may consult each other. 2. "S.." mean S, SA, SF, SAF, SAZ



电机需方配或配特殊电机时需加联接法兰



注：其余尺寸见相对应结构形式
 Note: For other values please refer to the o-posed structure.

When equipping the user's motor or the special one, the flange is required to be connected.

Y2电机机座号 Motor size	63	71	80	90S	90L	100				
功率/4P Power/(kW)	0.18	0.37	0.55 0.75	1.1	1.5	2.2 3.0				
L3	235	245	278	304	328	340				
G	130	145	175	195	195	215				
L2	71	71	71	71	71	93				

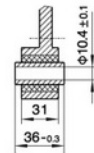
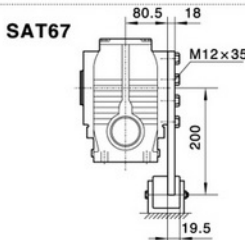
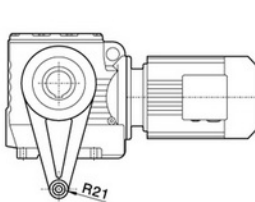
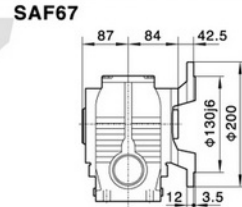
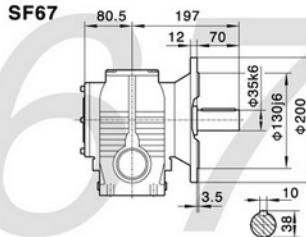
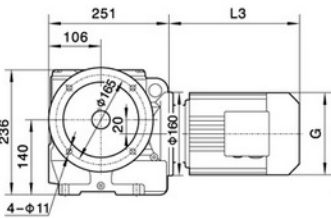
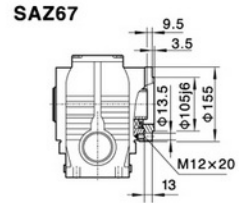
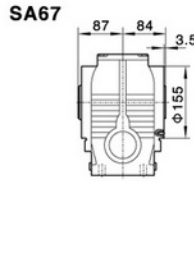
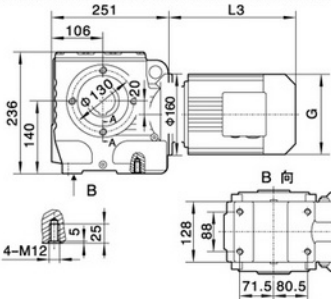
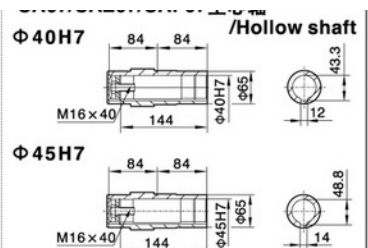
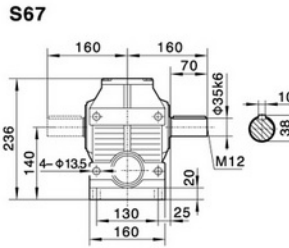
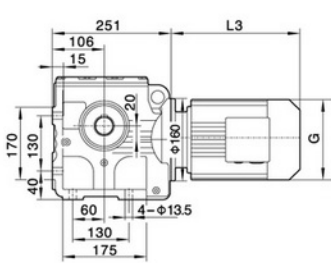
注:1.SA, SF, SAF, SAZ壳体为通用件,安装尺寸均可相互参照.2."S.."表示S, SA, SF, SAF, SAZ
 Note:1.The housings of SA, SF, SAF, SAZ are common parts.The mounting dimensions may consult each other. 2."S.."mean S, SA, SF, SAF, SAZ



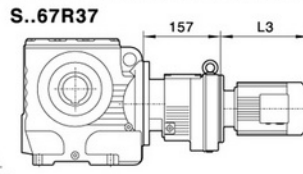
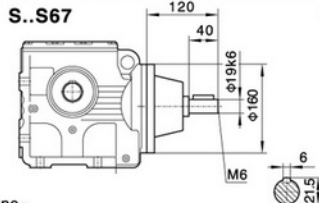
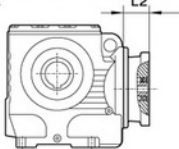
RED SUN
MACHINERY

外形安装尺寸
Mounting Dimension Sheets-overview

由 Foxit PDF Editor 编辑
版权所有 (c) by Foxit 公司, 2003 - 2010
仅用于评估。



电机需方配或配特殊电机时需加联接法兰



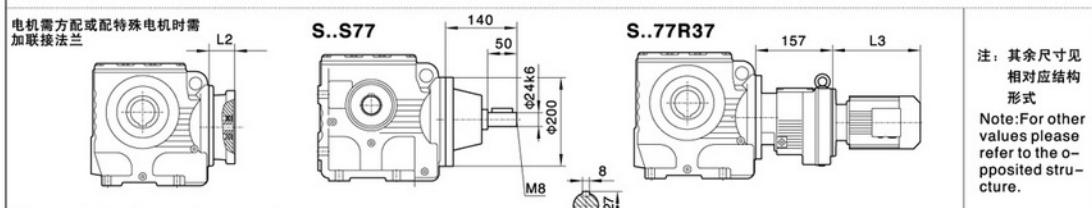
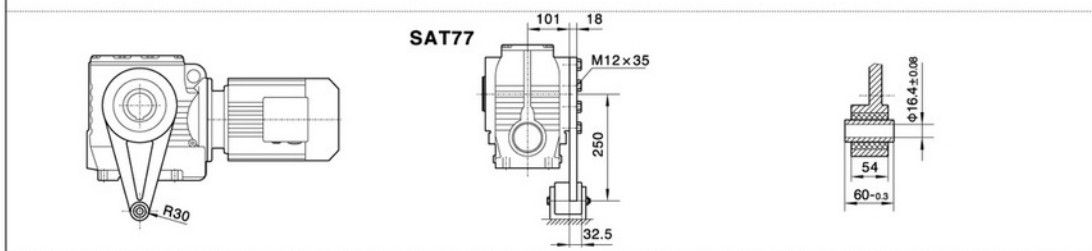
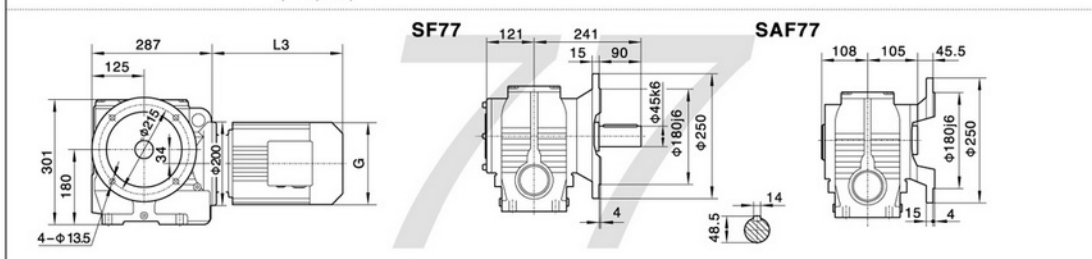
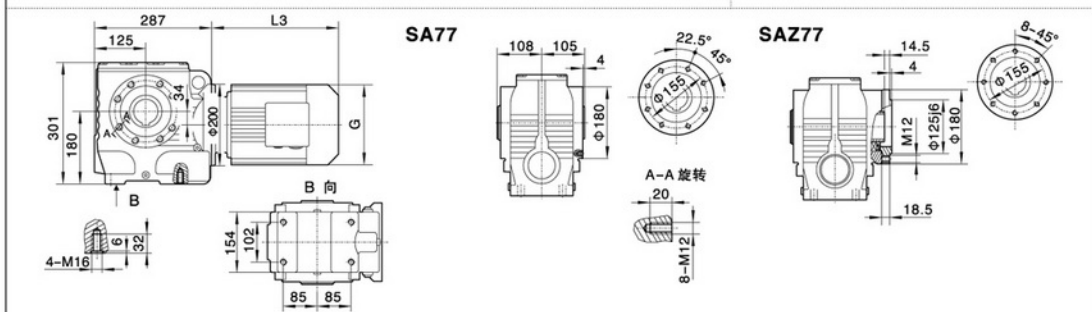
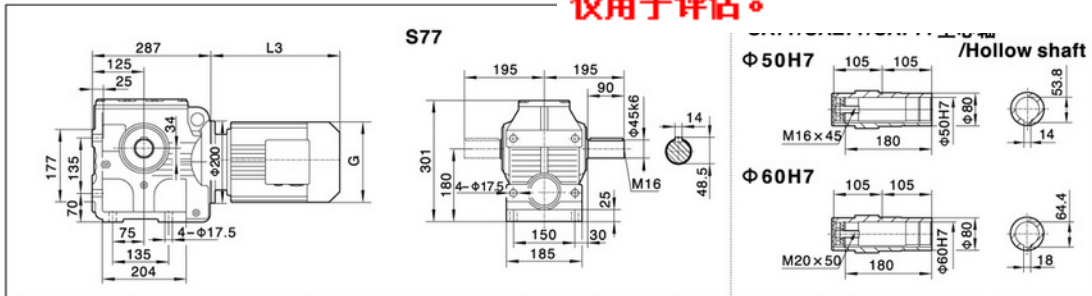
注: 其余尺寸见
相对应结构
形式
Note: For other
values please
refer to the o-
posed struc-
ture.

When equipping the user's motor or the special one, the flange is required to be connected.

Y ₂ 电机机座号 Motor size	71	80	90S	90L	100	112M	132S			
功率/4P Power/(kW)	0.25	0.37	0.55	0.75	1.1	1.5	2.2	3.0	4.0	5.5
L3	245	278	304	328	350	380	425			
G	145	175	195	195	215	240	275			
L2	81	81	81	81	93	93	101			

注: 1.SA、SF、SAF、SAZ壳体为通用件, 安装尺寸均可相互参照。2."S.."表示S、SA、SF、SAF、SAZ

Note: 1. The housings of SA, SF, SAF, SAZ are common parts. The mounting dimensions may consult each other. 2. "S.." mean S, SA, SF, SAF, SAZ



When equipping the user's motor or the special one, the flange is required to be connected.

Y2电机型号 Motor size	80	90S	90L	100	112M	132S	132M		
功率/4P Power/(kW)	0.55 0.75	1.1	1.5	2.2 3.0	4.0	5.5	7.5		
L3	278	304	328	350	380	425	461		
G	175	195	195	215	240	275	275		
L2	81	81	81	93	93	101	101		

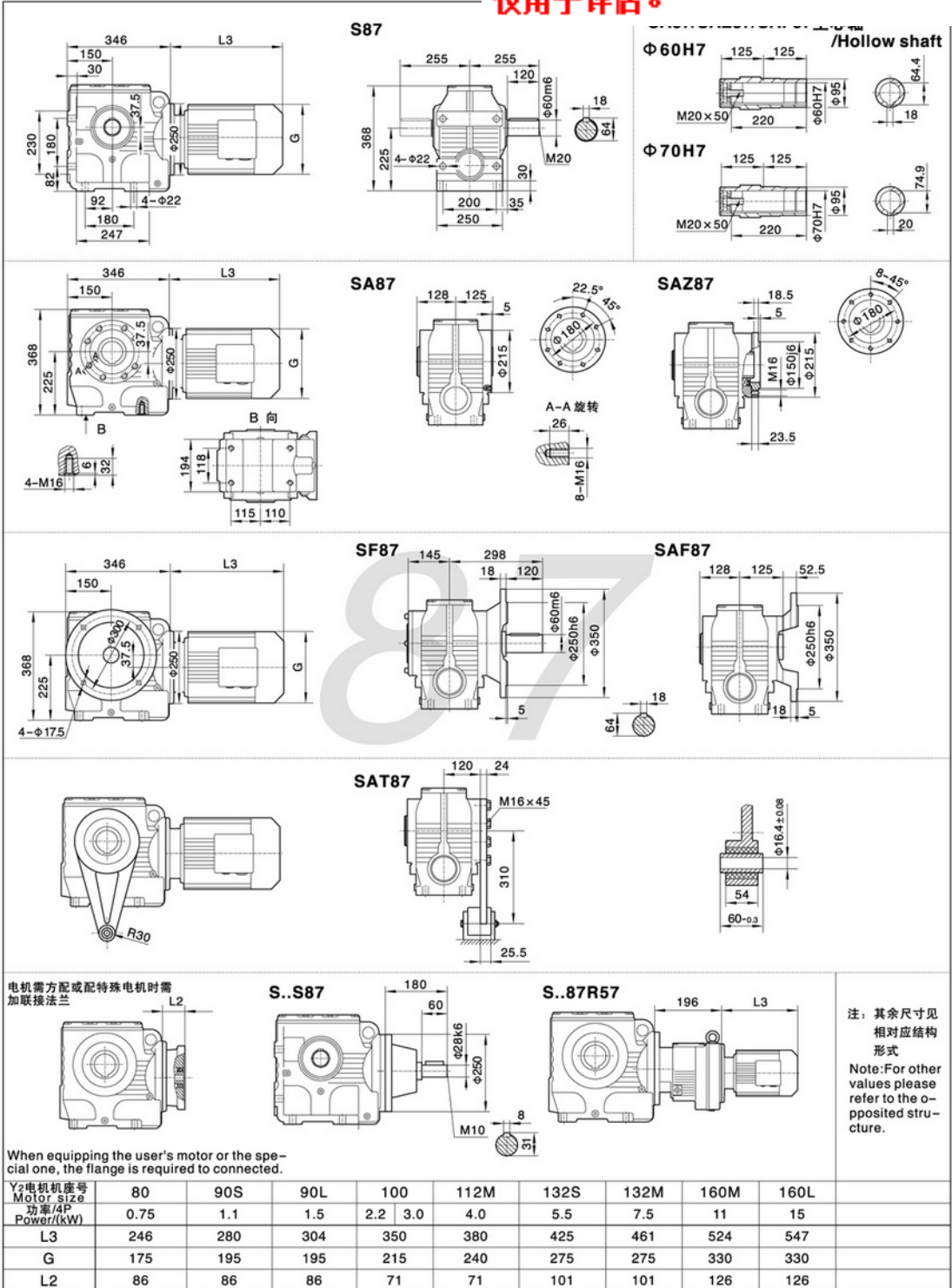
注: 1.SA, SF, SAF, SAZ壳体为通用件, 安装尺寸均可相互参照。2."S.."表示S, SA, SF, SAF, SAZ
 Note: 1.The housings of SA, SF, SAF, SAZ are common parts. The mounting dimensions may consult each other. 2."S.."mean S, SA, SF, SAF, SAZ



RED SUN
MACHINERY

外形安装尺寸
Mounting Dimension Sheets-overview

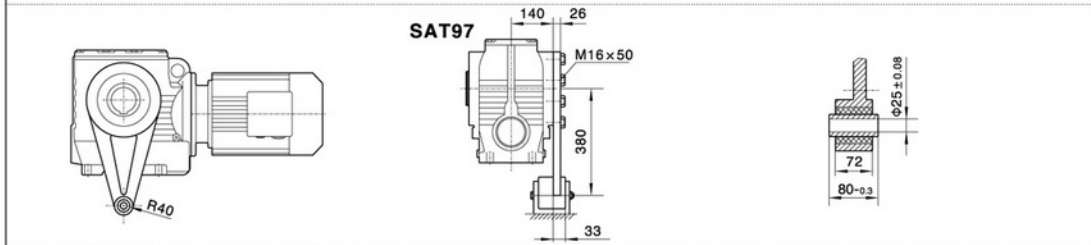
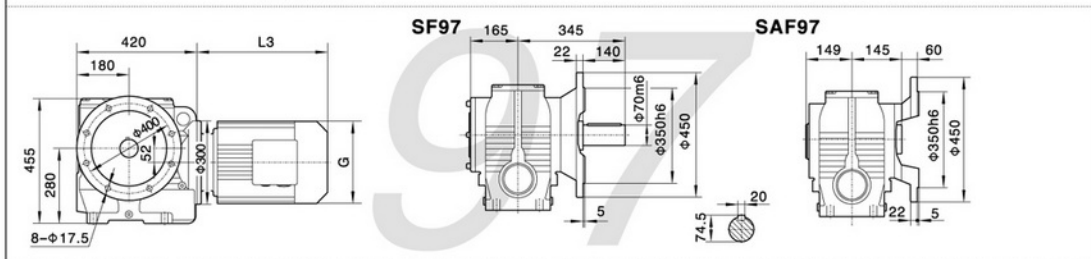
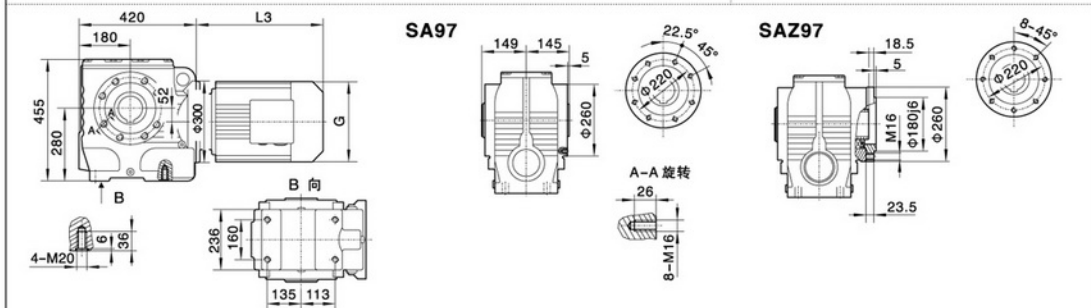
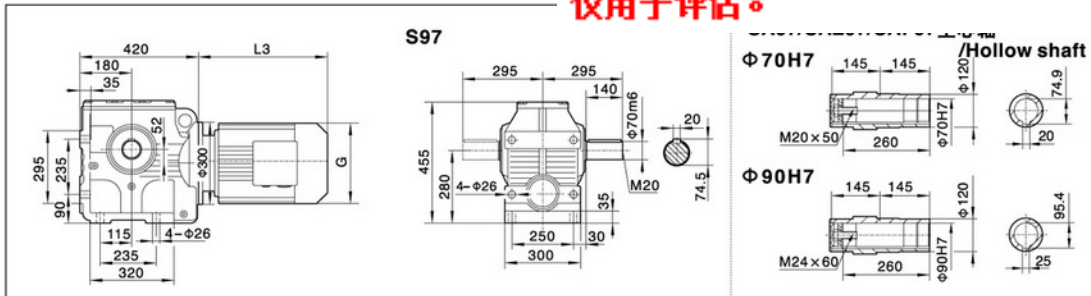
由 Foxit PDF Editor 编辑
版权所有 (c) by Foxit 公司, 2003 - 2010
仅用于评估。



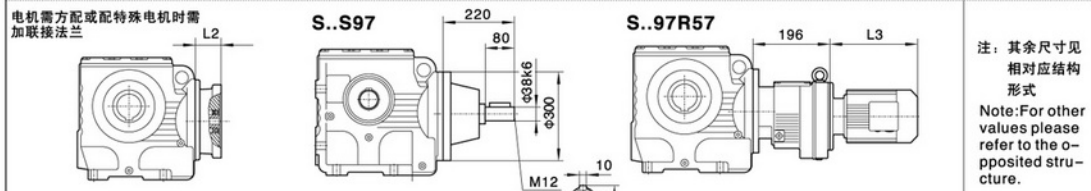
电机需方配或配特殊电机时需
加联接法兰

Y ₂ 电机机座号 Motor size	80	90S	90L	100	112M	132S	132M	160M	160L
功率/4P Power/(kW)	0.75	1.1	1.5	2.2	3.0	4.0	5.5	7.5	15
L3	246	280	304	350	380	425	461	524	547
G	175	195	195	215	240	275	275	330	330
L2	86	86	86	71	71	101	101	126	126

注: 1.SA、SF、SAF、SAZ壳体为通用件, 安装尺寸均可相互参照。2."S.."表示S、SA、SF、SAF、SAZ
Note: 1. The housings of SA, SF, SAF, SAZ are common parts. The mounting dimensions may consult each other. 2. "S.." mean S, SA, SF, SAF, SAZ



电机需方配或配特殊电机时需
 加联接法兰



注：其余尺寸见
 相对应结构
 形式
 Note: For other
 values please
 refer to the o-
 p-posed stru-
 cture.

When equipping the user's motor or the special one, the flange is required to be connected.

Y ₂ 电机型号 Motor size	90L	100	112M	132S	132M	160M	160L	180M	180L
功率/4P Power/(kW)	1.5	2.2	3.0	4.0	5.5	7.5	11	15	22
L3	304	315	334	425	461	524	547	555	588
G	195	215	240	275	275	330	330	380	380
L2	86	86	86	101	101	86	126	126	126

注：1.SA、SF、SAF、SAZ壳体为通用件，安装尺寸均可相互参照。2.“S..”表示S、SA、SF、SAF、SAZ

Note: 1. The housings of SA, SF, SAF, SAZ are common parts. The mounting dimensions may consult each other. 2. "S.." mean S, SA, SF, SAF, SAZ